



MatriX





Around a fire

Stories just keep coming

Together around the fire, familiar, comfortable. A good glass of wine, some nice music, the warmth around you, the light of the dancing flames. The stories come automatically. About what happened to you during the day, developments at work, news from friends and family. The stories from your past and your big dreams for the future. Things you don't usually share with others but that come so easy now, enveloped by warmth and trust. That's what a fire does to a person! Traditionally, fires were lit to keep the outside world at a distance. It's why a fire creates an atmosphere of intimacy and contact, where you listen to each other's stories.

A fire connects

Around a fire you share your holiday experiences with your friends, you tell your children a bedtime story, and you share your most intimate feelings with your loved one.

A look is all you need, and together you enjoy peaceful silence, gazing at the flames, because you don't need words to understand each other. The fire of love, where better than in front of an open fire? That is where you experience your most beautiful moments and when you take time for each other. That is where you share your stories, full of passion and full of fire!

There is **so much to tell...**



Faber means **175 years of quality**

The connective and soothing effect of an open fire is our passion. We are always looking for the best and most beautiful solutions, because we want our connoisseurs to enjoy an astonishing flame effect.

We strive for the same warmth and urge for quality in our contact with those around us. Our fires have been developed and produced in the Netherlands for devotees all over the world for more than 175 years. Today, Faber is part of the Irish family business Glen Dimplex, market leader in top-quality ambient electric fires. A strong and trusted combination, with a pure origin!

In the vanguard of the fire of the future
Faber's 'fire makers' are driven to produce the most beautiful ambient fires. Rooted in log fires, leading in gas fires and in the vanguard of fires with new fuels, such as biopropane, propane and water vapour. With pure craftsmanship, knowledge and advanced technology, Faber is responsible for discoveries and patents that have become standard in the world of fires today. Our latest series of fires, the 'e-Matrix', uses water and electricity and is equally innovative. In short, 'making' ambient fires is part of Faber's DNA, and our pride and passion!

Your Faber fire built especially for you
If you choose a Faber, we build, adjust the settings and check the fire specifically for you. You can be certain that you have a characteristic Faber fire effect and a fire that operates perfectly and safely.



Faber

Fire Masters

Our Fire Masters strive for the ultimate ambient fire. Professional people who turn their ideas into reality by using their imagination, technology and their bare hands. With an eye for the most subtle detail. They make sure that more than 175 years of knowledge and experience are translated into sustainable solutions for the next generation.

There is **so much to tell...**



Faber MatriX serie

maximum freedom of choice

The MatriX series offers the best of Faber. As the name 'MatriX' suggests, there is maximum freedom of choice to create the fire that fits your personal taste and interior décor. At the same time, you can count on the best quality that Faber has to offer. For fans of open fires who want to add maximum value to their interior décor and living environment.

Create your own fire

The MatriX series is 'modular' in composition, so there is a step-by-step choice of dimensions, the numbers of sides to experience the fire, the decoration, the finish and more. Even the fuel is a choice - all gas versions can be converted to natural gas, propane or biopropane. Are you going for the emission-free electric version, the e-MatriX?

These MatriX models can be recognised by the camp fire look of the logs or their tough horizontal logs (model RD/ST). A fire in the middle and all around too? The fire effect of our MatriX fires is incredibly realistic at any flame height. The choice of inset dimensions, versions or finishes meets the most wide-ranging living requirements.

The distinctive (e-) Matrix series is the winner of the many international awards

MatriX Linear Fires

The Linear Fire models offer a lavish fire effect over the full width of the fire and that is true for every flame height. Even with a minimum heat output, the flames of this model look fabulous. There is a choice of three inset widths, four inset versions and various interior decorations. For a fire that suits you.



Faber MatriX series

for a fire that suits you

The MatriX series offers the best of Faber. As the name 'MatriX' suggests, there is maximum freedom of choice to create the fire that fits your personal taste and interior décor. At the same time, you can count on the best quality that Faber has to offer. For fans of open fires who want to add maximum value to their interior décor and living environment.

Create your own fire

The MatriX series is 'modular' in composition, so there is a step-by-step choice of dimensions, the numbers of sides to experience the fire, the decoration, the finish and more. Even the fuel is a choice - all gas versions can be converted to natural gas, propane or biopropane. Are you going for the emission-free electric version, the e-MatriX?

The Faber specialist is there for you throughout the entire process!

Did you find your favourite Faber fire? It will be built, set and tested by Faber, specifically for you, before we deliver it to the Faber specialist who will install it in your home.



A Faber MatriX fire

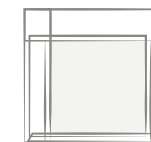
you create yourself

Whatever your preference may be, you always have our enchanting, patented fire effect; fire that fuels the stories people tell each other. Our modular program consists of several models, formats and decoration options.

Model options



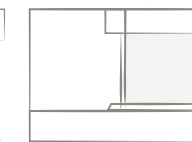
Front model



Two-sided model



Three-sided model



Room divider



See-through model

Decoration options



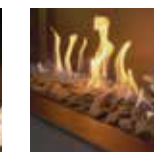
Log set



Large log set



Carrara pebbles



Grey split stones

Back walls



Back wall smooth steel



Back wall black mirror

Anti-reflective glass



With AR glass you reduce the unwanted light reflections from the glass of your fire. It ensures a better and more intense view of the flames.



A Faber Matrix fire suits any interior

Interior-design trends

Faber tracks the current interior design trends and developments in detail. This is reflected in our photography and the current trend information in this brochure. It shows how a Faber fire fits in your modern, classic or bohemian interior.

The Faber specialist will be pleased to assist!

Are you considering enriching your home with a Faber fire? Would you like an inspirational design that suits all your wishes and requirements? Faber has a network of selected fire specialists who are here to help. Committed and experienced enthusiasts who are familiar with the possibilities of Faber fires, and who have various Faber models on display. They are keen to advise and like to consider how you can translate your personal wishes into an appealing and attractive interior design. They also deal with professional installation. Check the Faber website for a Faber specialist near you.

Interior Design Style

Pastoral Poetry

This idyllic and chic, rustic style oozes warmth and cosiness. Natural materials, dried grasses combined with indigo hues make nature lovers feel at home.

LINEAR FIRE

MatriX | 800/400

Available as a front, two-sided or three-sided model
Also available on propane or biopropane



Interior Design Style

Botanical Board

This industrial style gives a fresh yet cosy look. A natural, functional base inspired by studio designs. Personal treasures are displayed in charming, industrial cabinets.

LINEAR FIRE

MatriX | 1050/400

Available as a front, two-sided or three-sided model
Also available on propane or biopropane



A

Interior Design Style

Space Scene

This modern and futuristic interior has a subtle hint of stars and planets. The long horizontal lines and neon lights produce a lavish and spacious effect.

LINEAR FIRE

MatriX | 1300/400

Available as a front, two-sided or three-sided model
Also available on propane or biopropane



B

PANTONE®
282C

PANTONE®
5405

PANTONE®
5305C

PANTONE®
7675C

PANTONE®
275C

PANTONE®
186C

Interior Design Style

Urban Unity

This style is a bohemian melting pot of city and nature. A collection of vintage treasures, presented in warm brown, copper and natural tints.

MatriX | 450/500 III

Also available on propane or biopropane



A

Interior Design Style

Lovely Lodge

This style is a bohemian combination of city and nature. A collection of vintage treasures, presented in warm brown, copper and natural tints.

MatriX | 450/650 I

Also available on propane or biopropane



A

PANTONE® 173C	PANTONE® 7620C	PANTONE® 5C	PANTONE® 7521C	PANTONE® 646C	PANTONE® 556C
------------------	-------------------	----------------	-------------------	------------------	------------------



MatriX | 450/650 II

Also available on propane or biopropane



A

We share our deepest secrets

“We lived in the same neighbourhood, shared the same school, the same sports clubs. We all have our own lives, but we like to get together to cook a meal. Taking a long time over dinner, we sit around the fire, often deep into the night, to share our stories.”

MatriX | 450/650 III

Also available on propane or biopropane



A

MatrIX | 800/500 I

Also available on electricity, propane and biopropane



B

MatriX | 800/500 II

Also available on electricity, propane and biopropane

B



MatriX | 800/500 III

Also available on electricity, propane and biopropane

B



MatriX | 800/500 RD/ST



B

LARGE LOGS

MatrIX | 800/500 RD

Also available on electricity, propane and biopropane

B



Interior Design Style

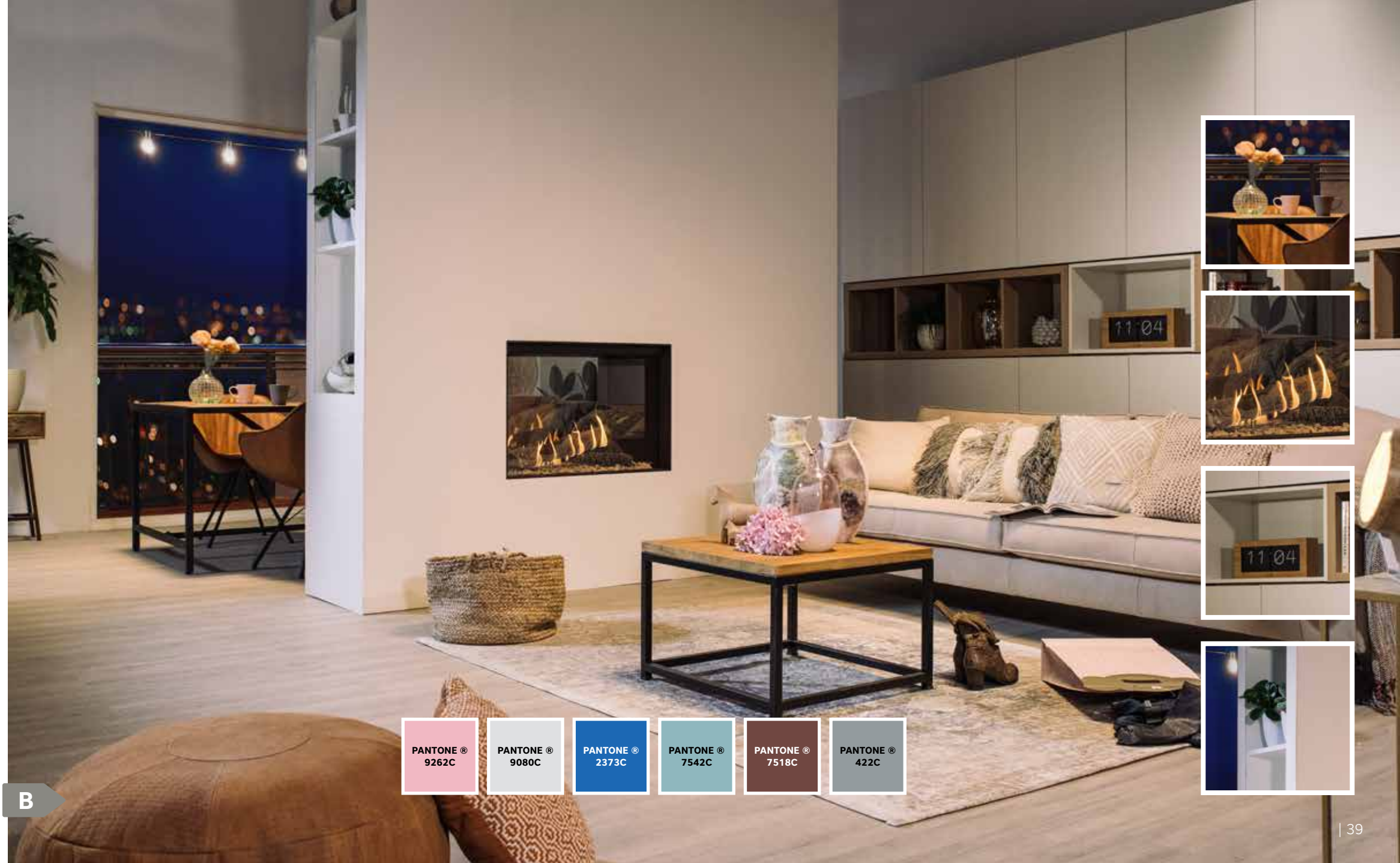
Delicate Desire

This contemporary style is characteristically modern with pure lines and geometric shapes. Lots of light, with pastel colours, warm and light fabrics, and a feel for nature.

LARGE LOGS

MatrIX | 800/500 ST

Also available on electricity, propane and biopropane



PANTONE®
9262C

PANTONE®
9080C

PANTONE®
2373C

PANTONE®
7542C

PANTONE®
7518C

PANTONE®
422C

B

MatrIX | 800/650 I

Also available on electricity, propane and biopropane



B

MatriX | 800/650 II

Also available on electricity, propane and biopropane

B



MatrIX | 800/650 III

Also available on electricity, propane and biopropane

B



Small moments of happiness!

"We've been in this house for about 30 years. A little big maybe now that the children have left home. You can't get us away from here. We did want to live environmentally aware. So we had the whole house insulated from top to bottom, solar panels on the roof and we bought an energy-efficient fire."

MatriX | 1050/500 I

Also available on propane or biopropane



B

Conversations

between brother and sister

"Children live in a wonderfully natural and uninhibited world. They create their own reality. We agreed to turn off the telly in the evening. Just a bit of time together, enjoying my little ones around the 'camp fire'."

MatriX | 1050/500 II

Also available on propane or biopropane

B



Daddy knows so much

“Daddy evening is what he calls it. Every Friday evening. In the back garden in summer and in winter the two of us in front of the fire. We enjoy ‘construction projects’ together. Sometimes it’s Lego, sometimes it’s a construction kit. He’s growing up and the questions are becoming more difficult. To me he’ll always be my little boy.”

MatriX | 1050/500 III

Also available on propane or biopropane

B



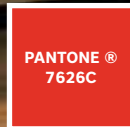
Interior Design Style

Holistic Harmony

This style has oriental influences. Back to the heart, harmony and simplicity at the basis. The exotic abundance in the warm details of the MatriX RD/ST fire really packs a punch.

MatriX | 1050/500 RD/ST

Also available on electricity, propane and biopropane



B



MatrIX | 1050/650 I

Also available on propane or biopropane

B



MatriX | 1050/650 II

Also available on propane or biopropane



B

MatrIX | 1050/650 III

Also available on propane or biopropane

B





The heart of every Faber fire

The burner

The familiar and loved fire effect of our gas fires starts with our burners. It's a Faber speciality, based on years of in-house development and experience, with lots of patents as a result. Together with the decorations, such as a log set, the burner determines the 'character' of the fire you look at; broadly spread in the fire, or in the middle, stretched out or vertical, more dynamic or really calm. It's a matter of taste! To help you determine your preference, we tell you a little about the characteristics and the differences.

Faber Log Burner® 2.0

The pure experience of a camp fire

The Log Burner® 2.0 brings memories of a flickering camp fire to life in a fabulously realistic way; with standing logs in the middle, surrounded by lying blocks. You can choose to have the fire burn just in the middle, or all around too. The MatriX RD and ST have large, lying logs, where the flames can curl up on the outside or around the logs. The fire starts up in just a few seconds and the height of the flames can be set with accuracy. The ash bed is lit from below with glowing embers lighting; Faber Symbio®. It makes the fire look full and rich, with a warm glow, even when the flames are set low. The glowing embers can also be switched on separately, like the last glowing embers of a fire. The main functions are easy to operate with the supplied remote control. Additional functions are available with the Faber ITC app, via your smartphone or tablet.



Faber Log Burner® 3.0

the future standard



The new Log Burner® 3.0 is the latest Faber development, and is truly innovative in efficient, hybrid burner technology. The burner tubes are no longer straight and round, but rather follow the natural contours of the wood logs. This gives the wood set an amazingly realistic look, and the flames flicker in precisely the right place. The Multi-Step switch distributes the flames accurately over the 7 burners, to give a number of fascinating flame patterns. What's more, this burner is suitable for the LED technology of the (optional) HPL module. This combination results in a uniquely full and lavish fire and ember bed, while reducing gas consumption and heat production by more than half! The main functions can be simply operated using the remote control supplied, the app offers extra operating functions.

Faber Double Line Burner

Wide, stretched out and calm



The fire of the Double Line Burner burns with regular and particularly full flames across the entire width of the fire. You can have the fire burn just at the front (single row) or at the back too (double row), for a full fire effect and extra heat. The fire starts up in just a few seconds and the height of the flames can be set with accuracy. For decoration there is a choice of beautiful, horizontal logs on a realistic bed of ash, a bed of stylish grey split stones or white Carrara pebbles. The main functions are easy to operate with the remote control that is supplied as standard. Additional functions are available with the Faber ITC app, on your smartphone or tablet; see page 50. The Faber Double Line Burner is exclusively for the models MatriX Linear Fires 800/400, 1050/400 and 1300/400.



Hybrid Pro Light Module

New light on a gas fire

Faber never stops developing, and that certainly applies to our gas fires. For beautiful full flames in the right place, with glowing logs and a warm red glow. A place where you can let your eyes wander. At the same time, we strive to create an impressive, rich ambient fire with the lowest possible gas consumption and heat production, in view of the proper insulation of modern houses. That requires craftsmanship!

Our latest development in this area is the Hybrid Pro Light Module. An innovation that literally throws a completely new light on the future of gas fires. With this ingenious system of LED light projection across the heart of the gas fire, the Faber fire masters have managed to create an incredibly fascinating and complete effect of flames and lively sparkling logs and coals, even at the lowest setting. As if you are looking directly into a fire burning at full capacity, but with just half of the gas consumption and the corresponding heat production! Even without flames, the warm glow of the smart 'HPL module' is bewitchingly real. Combining the best of gas and light. And truly of our time, as we want to enjoy our fires responsibly.

The Hybrid Pro Light Module is available as an option for our brand-new MatriX 800 and 1050/500 RD and ST fires.



Glowing embers lighting

The atmosphere of red-glowing charcoal



For those who would like to do even more justice to the sense of glowing coals in a gas fire, or who would like to enjoy the embers of a glowing fire, Faber developed the 'Symbio®' light module. Symbio® sends pulsating, heat-free light to the coal bed above, making it glow a warm red. The light of the Symbio® module creates a warm atmosphere, particularly when the flames of the fire are turned down low, and even when the warm flames are completely switched off. The LED technology makes this module low in energy and completely free of heat. It is easy to operate this option with the remote control of the fire or with the Faber ITC-app. Symbio® is supplied for the MatriX series (gas), Faber Vejen and the Blokhuis.

The Faber ITC-app

get more from your Faber fire



Faber ITC (Intelligent Technical Control) is a smart way of operating your Faber fires with your smartphone or tablet. Besides the standard operating functions, the Faber ITC has a number of additional options to improve the enjoyment and convenience of use and to control energy consumption. Follow your dreams with the preprogrammed 'relaxed mood' setting or set the room temperature or operating period from your phone or tablet. Make sure the fire turns off automatically when nobody is around for a period of time or when the window is open. Finally, the Faber ITC tracks the usage history and service needs and informs the app as soon as maintenance is required. This information helps the Faber specialist to carry out maintenance more efficiently.



Inset depth

Flexible application

When you inset a Faber fire from the e-MatriX or MatriX series, you have a choice of having the fire and frame inset, or to have the glass of the fire flush with the material of the surround.

Every Faber e-MatriX or MatriX fire is supplied standard with a black steel frame of 50 millimetres that is easy to remove by the Faber specialist.

No natural gas connection

but you'd love a gas fire?
No problem!



No longer a permanent gas connection or rather not be dependent on one, but still like a gas fire in your home? Sure! All Faber gas fires are suitable immediately for use on propane gas or biopropane gas. take a look at the Faber website on: faberfires.com.

MatriX Linear Fires

		DIMENSIONS		BURNER	DECORATION		
	Page	Exterior dimensions WxHxD in mm	Fire display WxHxD in mm	Double line burner®	Logs	Grey split stones	White Carrara pebbles
MatriX 800/400 I	14	933 x 811 x 452	800 x 400	●	●	Optional	Optional
MatriX 800/400 II	14	987 x 811 x 452	835 x 400 x 257	●	●	Optional	Optional
MatriX 800/400 III	14	1040 x 811 x 452	872 x 400 x 257	●	●	Optional	Optional
MatriX 1050/400 I	16	1183 x 811 x 452	1050 x 400	●	●	Optional	Optional
MatriX 1050/400 II	16	1237 x 811 x 452	1085 x 400 x 257	●	●	Optional	Optional
MatriX 1050/400 III	16	1290 x 811 x 452	1122 x 400 x 257	●	●	Optional	Optional
MatriX 1300/400 I	18	1433 x 811 x 452	1300 x 400	●	●	Optional	Optional
MatriX 1300/400 II	18	1487 x 811 x 452	1335 x 400 x 257	●	●	Optional	Optional
MatriX 1300/400 III	18	1540 x 811 x 452	1372 x 400 x 257	●	●	Optional	Optional

For more information, please take a look at
the website: **www.faberfires.com**

It is not possible to derive any rights from the listed values. Fires on biopropane or propane have a lower flame height.
*Efficiency, capacity, energy-efficiency index and energy-efficiency class on the basis of gas type G20.

INTERIOR		GLASS	CONTROLLER		Minimum heat output*	Nominal heat output*	Energy label
Back wall smooth steel	Back wall black mirror	Anti-reflective glass	Remote control	ITC module			
●	Optional	Optional	●	●	2,5 kW	7,1 kW	B
●	Optional	Optional	●	●	2,5 kW	7,1 kW	B
●	Optional	Optional	●	●	2,5 kW	7,1 kW	B
●	Optional	Optional	●	●	3,0 kW	8,7 kW	A
●	Optional	Optional	●	●	3,0 kW	8,7 kW	A
●	Optional	Optional	●	●	3,0 kW	8,7 kW	A
●	Optional	Optional	●	●	3,2 kW	10,5 kW	B
●	Optional	Optional	●	●	3,2 kW	10,5 kW	B
●	Optional	Optional	●	●	3,2 kW	10,5 kW	B

The options per fire produce an additional cost.

MatriX fires

For more information, please take a look at the website: www.faberfires.com

	Page	DIMENSIONS		BURNER		DECORATION	
		Exterior dimensions WxHxD in mm	View of the fire WxHxD in mm	Log Burner® 2.0	Log Burner® 3.0	Logs	Log set with large logs
MatriX 450/500 III	20	690 x 918 x 502	522 x 500 x 308	●		●	
MatriX 450/650 I	22	584 x 1068 x 497	450 x 650	●		●	
MatriX 450/650 II	24	637 x 1068 x 502	485 x 650 x 308	●		●	
MatriX 450/650 III	26	690 x 1068 x 502	522 x 650 x 308	●		●	
MatriX 800/500 I	28	934 x 918 x 547	800 x 500	●		●	
MatriX 800/500 II	30	987 x 918 x 552	835 x 500 x 358	●		●	
MatriX 800/500 III	32	1040 x 918 x 552	872 x 500 x 358	●		●	
MatriX 800/500 RD	34	1354 x 1049 x 598	850 x 500 x 400		●	●	
MatriX 800/500 ST	34	1301 x 1049 x 598	823 x 500		●	●	
MatriX 800/500 RD LL	36	1329 x 1015 x 592	400 x 500 x 840	●			●
MatriX 800/500 ST LL	38	1267 x 1015 x 592	800 x 500	●			●
MatriX 800/650 I	40	934 x 1068 x 547	800 x 650	●		●	
MatriX 800/650 II	42	987 x 1068 x 552	835 x 650 x 358	●		●	
MatriX 800/650 III	44	1040 x 1068 x 552	872 x 650 x 358	●		●	
MatriX 1050/500 I	46	1184 x 911 x 547	1050 x 500	●		●	
MatriX 1050/500 II	48	1237 x 918 x 552	1085 x 500 x 358	●		●	
MatriX 1050/500 III	50	1290 x 918 x 552	1122 x 500 x 358	●		●	
MatriX 1050/500 RD	52	1604 x 1049 x 598	1100 x 500 x 400		●	●	
MatriX 1050/500 ST	52	1551 x 1049 x 598	1073 x 500		●	●	
MatriX 1050/650 I	54	1188 x 1069 x 585	1050 x 650	●		●	
MatriX 1050/650 II	56	1240 x 1069 x 585	1085 x 650 x 358	●		●	
MatriX 1050/650 III	58	1293 x 1069 x 585	1122 x 650 x 358	●		●	

It is not possible to derive any rights from the listed values. Fires on biopropane or propane have a lower flame height.

*Efficiency, capacity, energy-efficiency index and energy-efficiency class on the basis of gas type G20.

DECORATION		INTERIOR		GLASS	CONTROLLER		Minimum heat output*	Nominal heat output*	Energy label
Glowing embers lighting	HPL module	Back wall smooth steel	Back wall black mirror	Anti-reflective glass	Remote control	ITC-module			
Optional		●	Optional	Optional	●	Optional	3,2 kW	6,8 kW	A
Optional		●	Optional	Optional	●	Optional	3,2 kW	6,8 kW	A
Optional		●	Optional	Optional	●	Optional	3,2 kW	6,8 kW	A
Optional		●	Optional	Optional	●	Optional	3,2 kW	6,8 kW	A
Optional		●	Optional	Optional	●	●	4,1 kW	8,1 kW	B
Optional		●	Optional	Optional	●	●	4,1 kW	8,1 kW	B
Optional		●	Optional	Optional	●	●	4,1 kW	8,1 kW	B
	Optional	●	Optional	Optional	●	●	2,2 kW	12 kW	B
	Optional	●	Optional	Optional	●	●	2,2 kW	12 kW	B
Optional		●	Optional	Optional	●	●	3,5 kW	10,5 kW	B
Optional		●	Optional	Optional	●	●	3,5 kW	10,5 kW	B
Optional		●	Optional	Optional	●	●	4,3 kW	10,0 kW	B
Optional		●	Optional	Optional	●	●	4,3 kW	10,0 kW	B
Optional		●	Optional	Optional	●	●	4,3 kW	10,0 kW	B
Optional		●	Optional	Optional	●	●	4,1 kW	8,1 kW	B
Optional		●	Optional	Optional	●	●	4,1 kW	8,1 kW	B
Optional		●	Optional	Optional	●	●	4,1 kW	8,1 kW	B
	Optional	●	Optional	Optional	●	●	2.3 kW	12,0 kW	B
	Optional	●	Optional	Optional	●	●	2.3 kW	12,0 kW	B
Optional		●	Optional	Optional	●	●	4,3 kW	10,0 kW	B
Optional		●	Optional	Optional	●	●	4,3 kW	10,0 kW	B
Optional		●	Optional	Optional	●	●	4,3 kW	10,0 kW	B

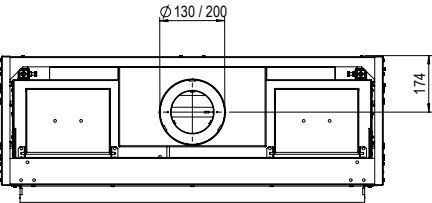
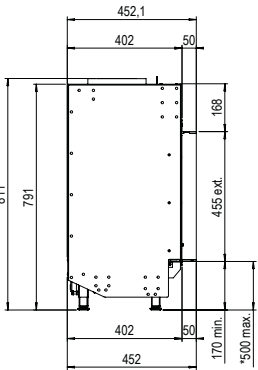
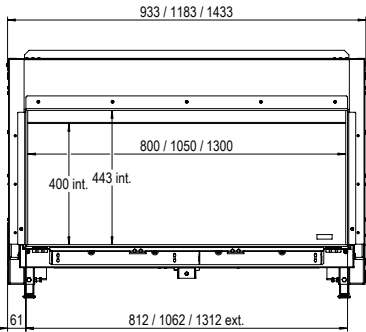
The options per fire produce an additional cost.

Line drawings

MatriX Linear Fire | Front

800/400, 1050/400, 1300/400

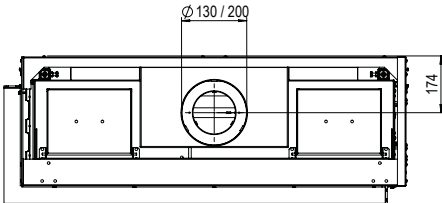
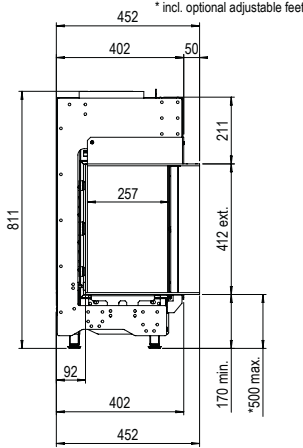
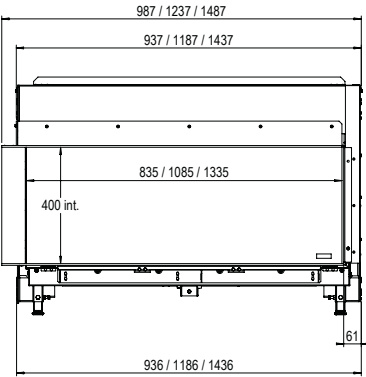
Page 14, 16, 18



MatriX Linear Fire | Two-sided

800/400, 1050/400, 1300/400

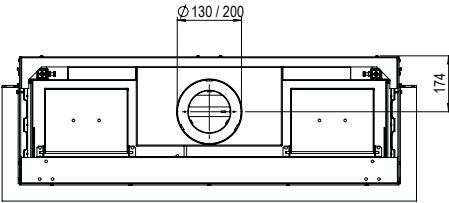
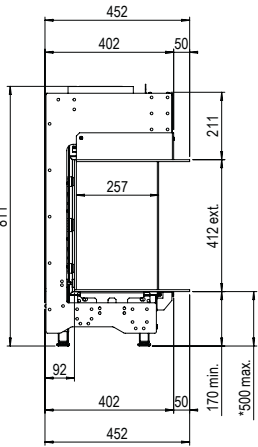
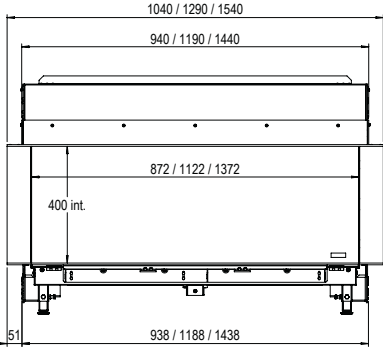
Page 14, 16, 18



MatriX Linear Fire | Three-sided

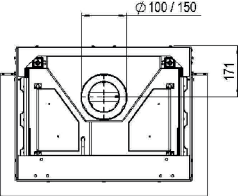
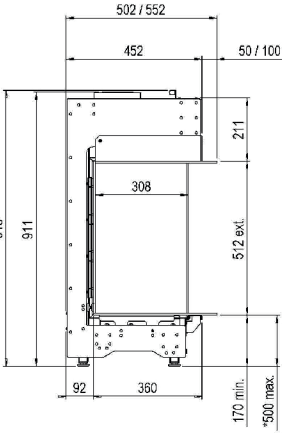
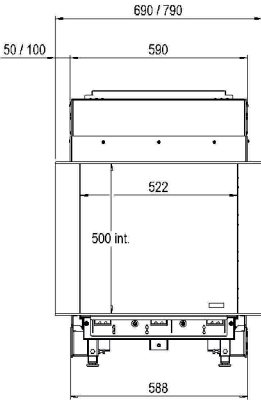
800/400, 1050/400, 1300/400

Page 14, 16, 18



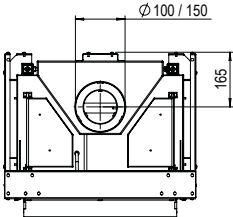
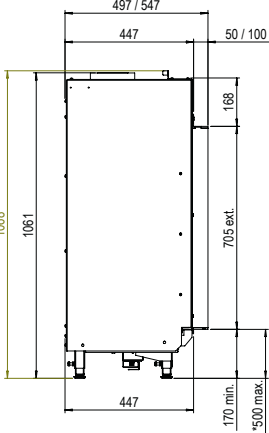
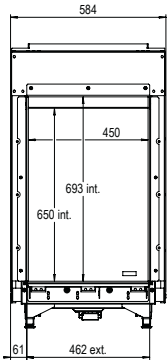
MatriX | 450/500 III

Page 20



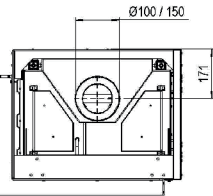
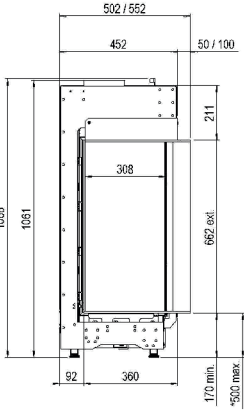
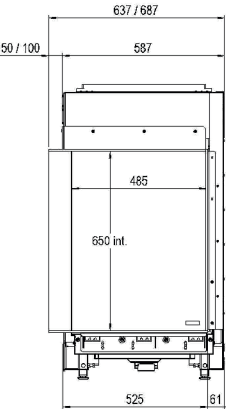
MatriX | 450/650 I

Page 22



MatriX | 450/650 II

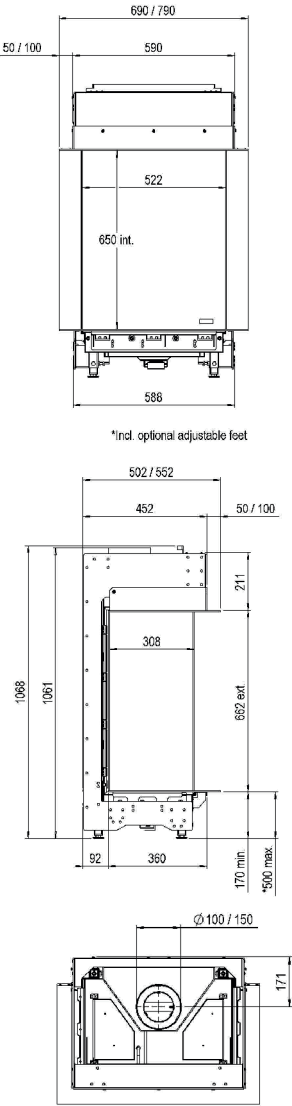
Page 24



Line drawings

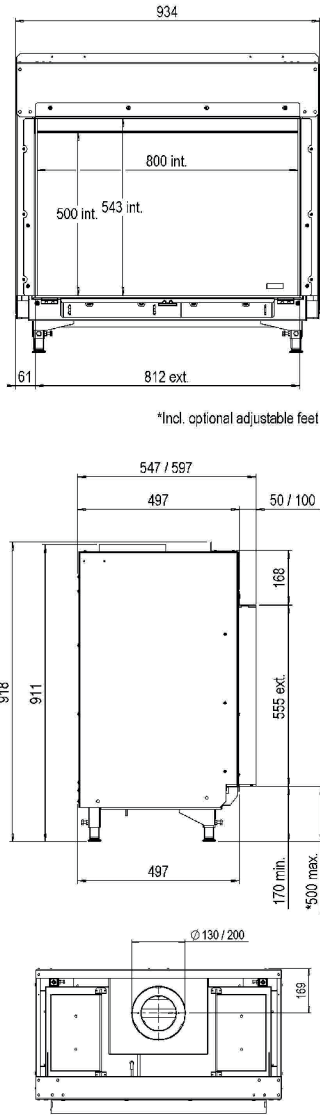
MatriX | 450/650 III

Page 26



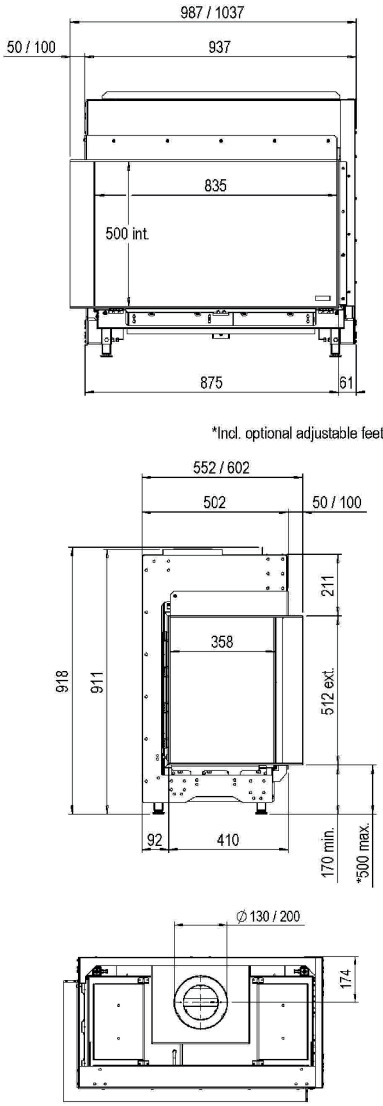
MatriX | 800/500 I

Page 28



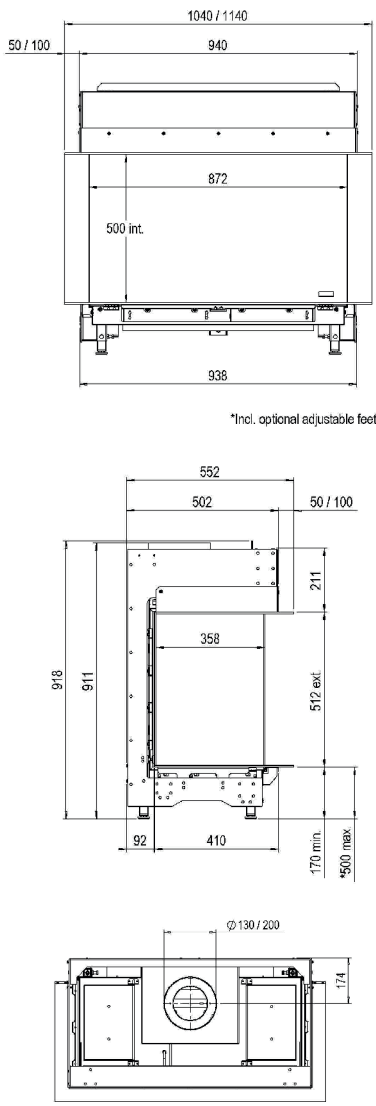
MatriX | 800/500 II

Page 30



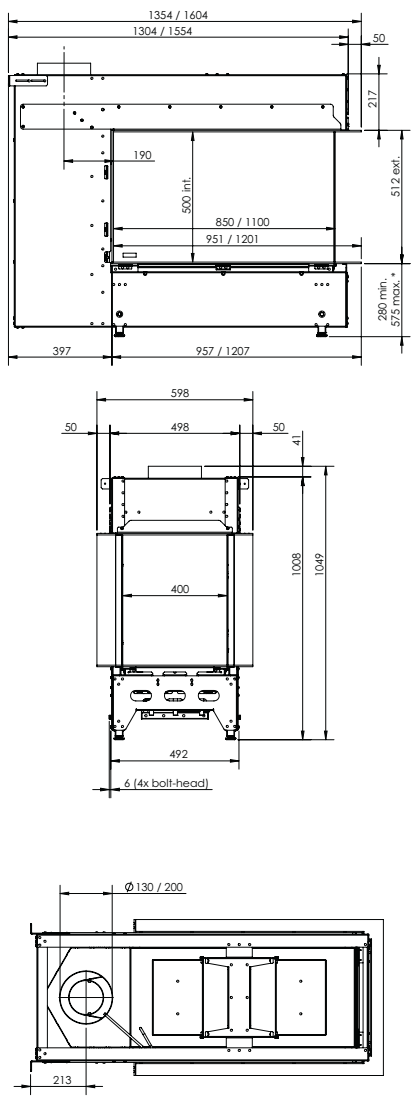
MatriX | 800/500 III

Page 32



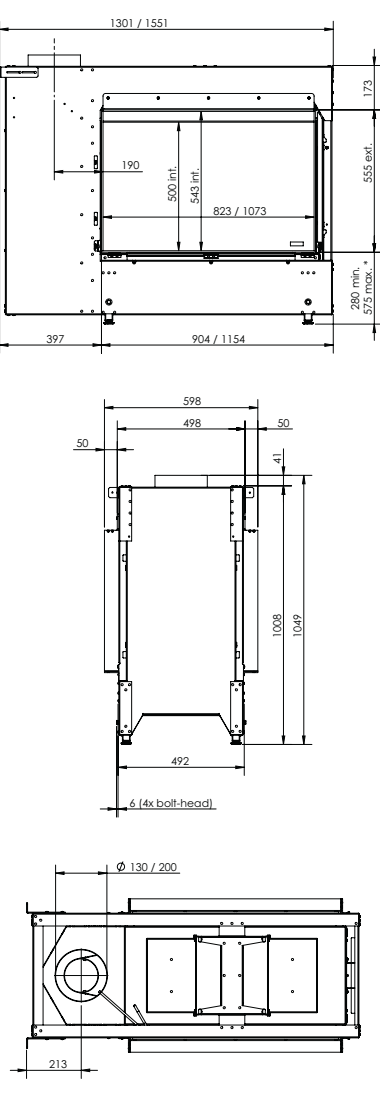
MatriX | 800/500 RD

Page 34



MatriX | 800/500 ST

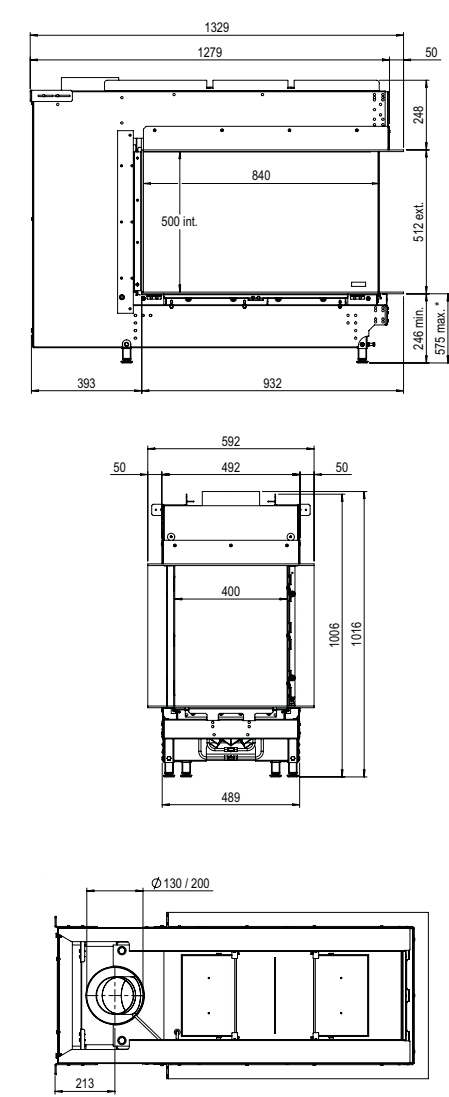
Page 34



Line drawings

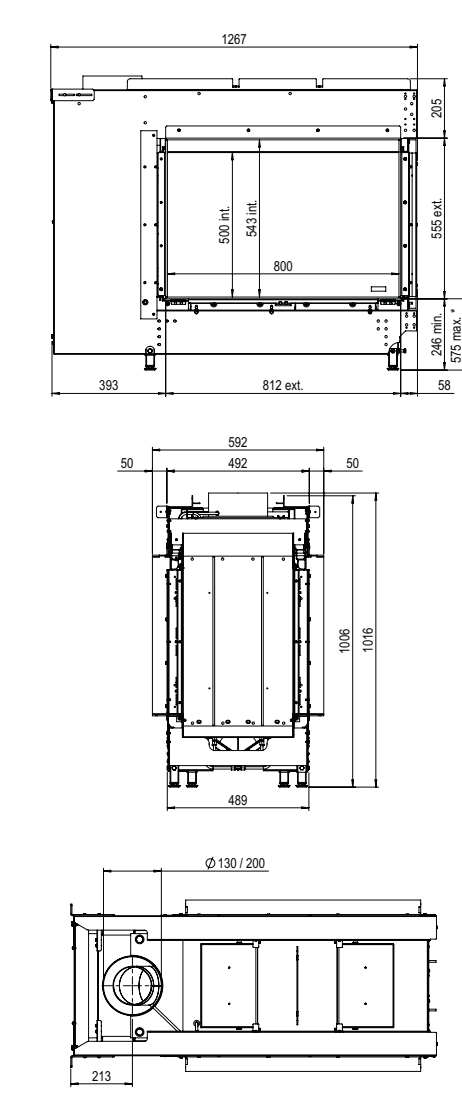
MatriX | 800/500 RD LL

Page 36



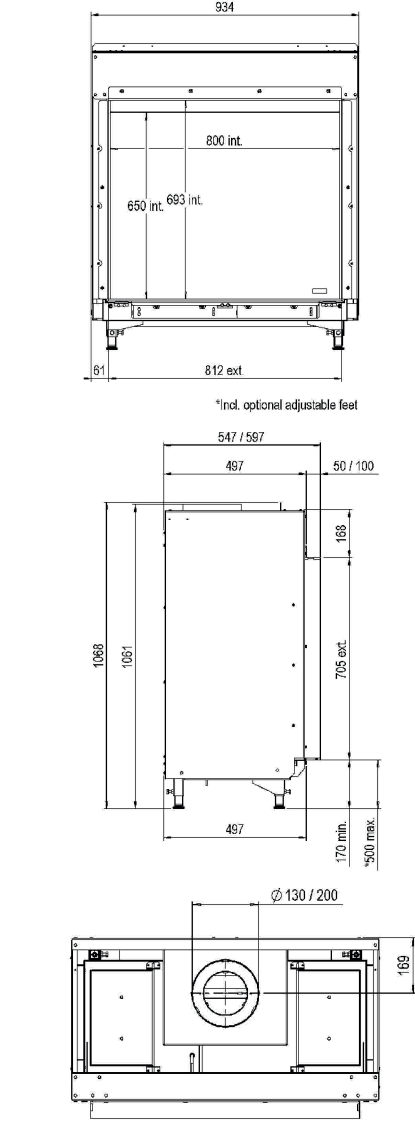
MatriX | 800/500 ST LL

Page 38



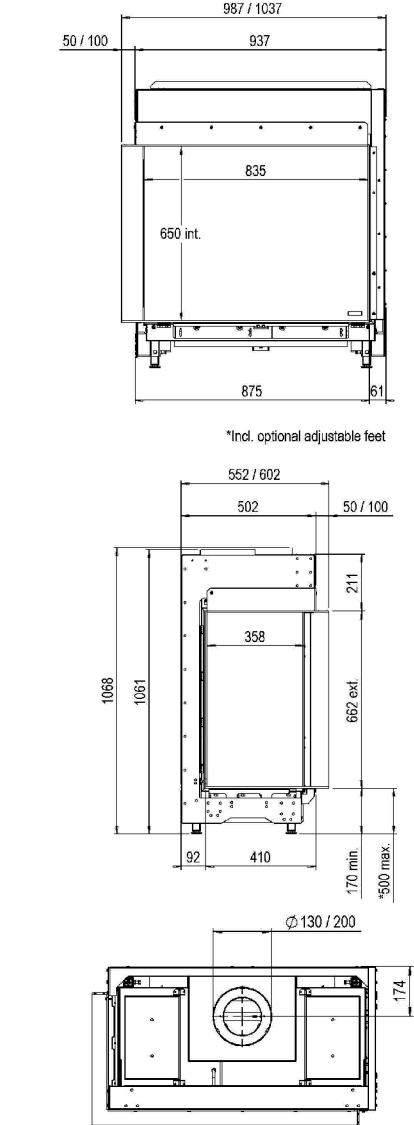
MatriX | 800/650 I

Page 40



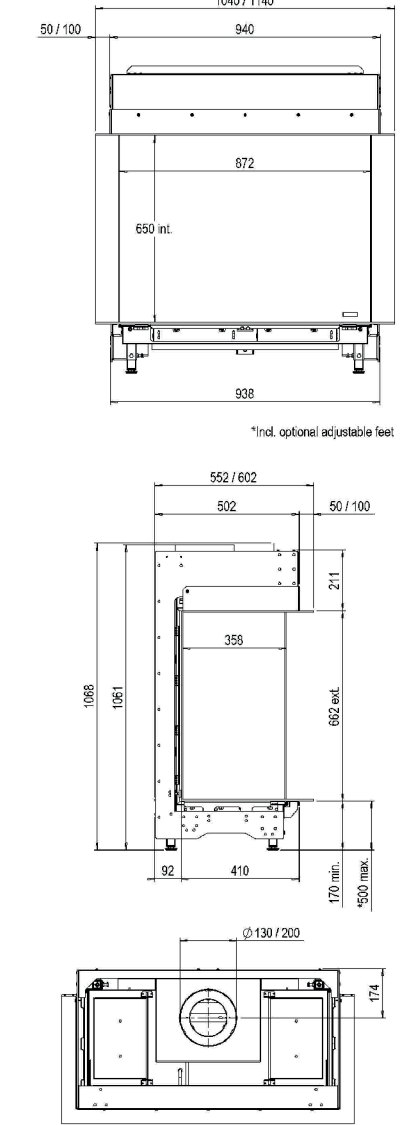
MatriX | 800/650 II

Page 42



MatriX | 800/650 III

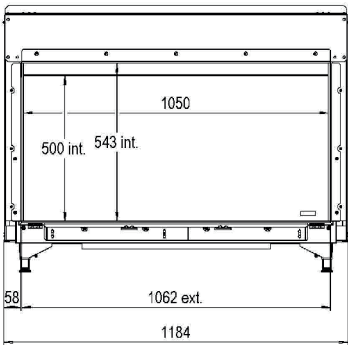
Page 44



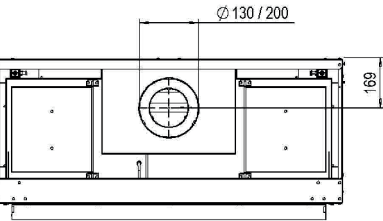
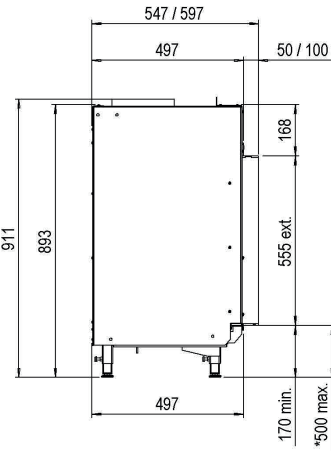
Line drawings

MatriX | 1050/500 I

Page 46

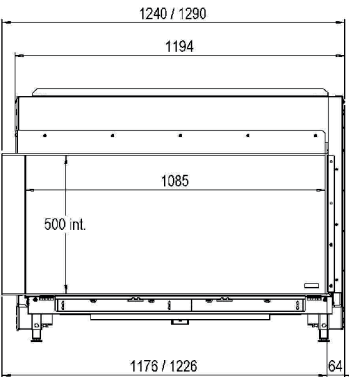


* Incl. optional adjustable feet

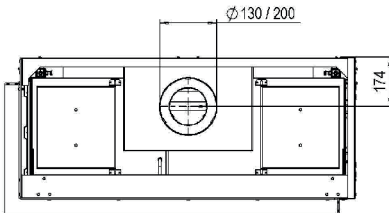
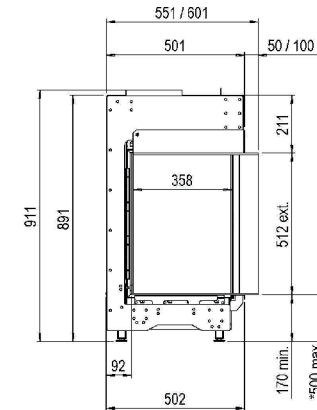


MatriX | 1050/500 II

Page 48

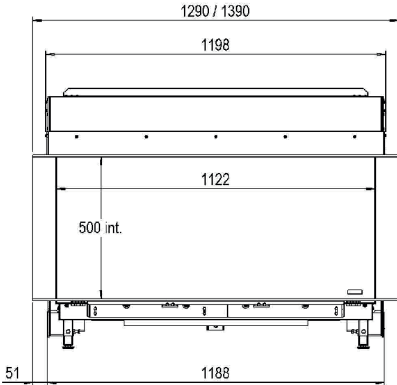


* Incl. optional adjustable feet

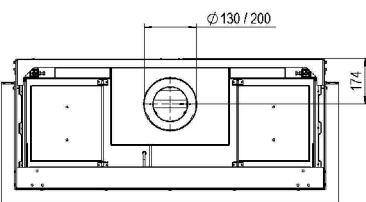
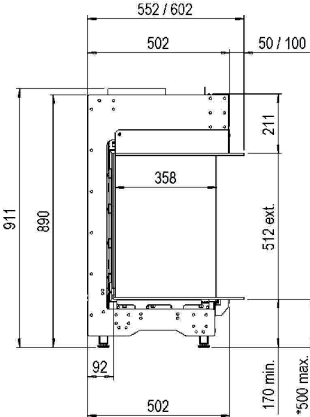


MatriX | 1050/500 III

Page 50

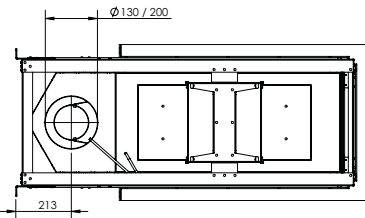
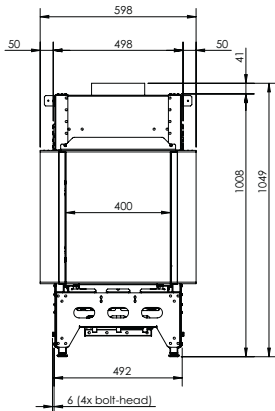
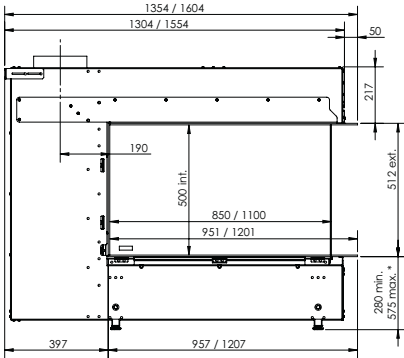


* Incl. optional adjustable feet



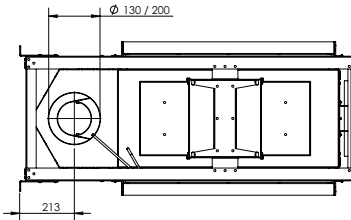
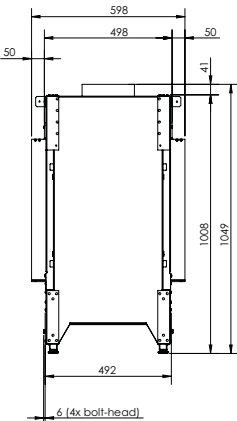
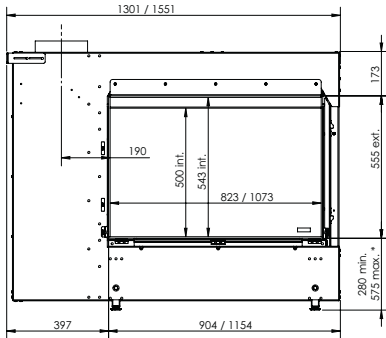
MatriX | 1050/500 RD

Page 52



MatriX | 1050/500 ST

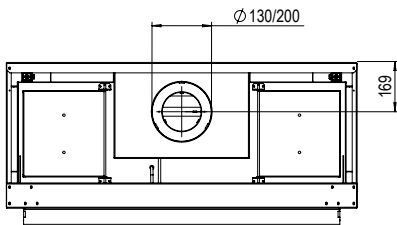
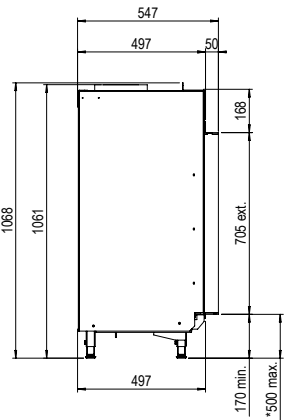
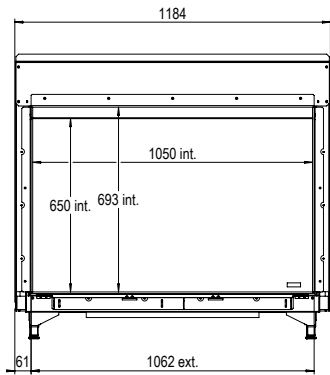
Page 52



Line drawings

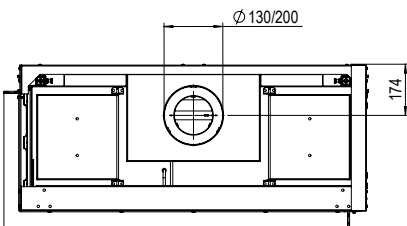
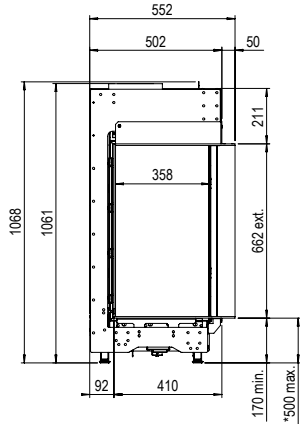
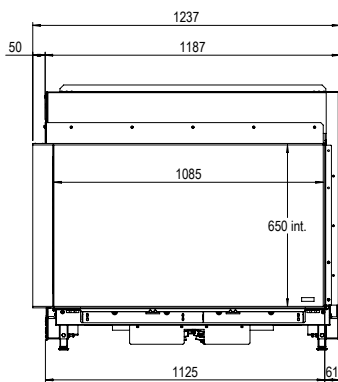
MatriX | 1050/650 I

Page 54



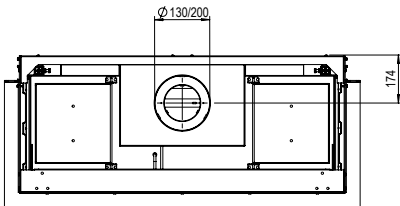
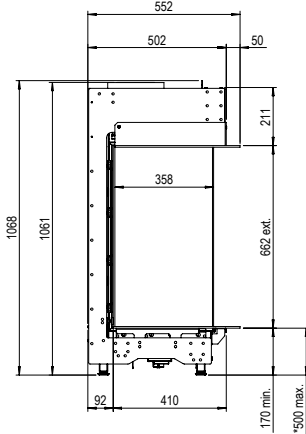
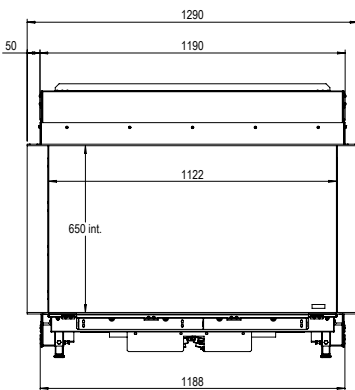
MatriX | 1050/650 II

Page 56



MatriX | 1050/650 III

Page 58



Draw a dream fire

in your own home

Measurements provide knowledge!

Would you like to know the exact dimensions of our inset fires and stoves? Our dimensions drawings are in this brochure or on our website www.faberfires.com.

You can also find our fires in the design programmes 'SketchUp' or PaletteCad. Convenient when you want to draw on your own inspiration! <https://www.sketchup.com/> and https://www.palettacad.com/en/home_2

The Faber dealer, who can be found on www.faberfires.com, will help you to realise your design.

Your dealer:

Disclaimer

We have produced this publication with the greatest possible care. However the information, including drawings, in this publication may be represented incorrectly, it may have changed or been supplemented. This publication is subject to change. Glen Dimplex Benelux BV is not responsible for the consequences of actions, decisions or results that are solely based on the information in this publication. We emphasise that the correct installation and safe operation should be in accordance with the applicable rules and regulations, the manual, and the expertise and advice of an expert. The photos in this publication only represent examples of possible configurations. Whilst stocks last. Our terms and conditions of delivery are available upon request.



Saturnus 8, NL-8448 CC Heerenveen
PO Box 219, NL-8440 AE Heerenveen

t +31 513 656 500
e info@faberfires.com

faberfires.com

@faberhaarden



FaberInternational



Proud brand of:

