



 **faber**

Free standing | 2020/2021 



Around a fire

Stories just keep coming

Together around the fire, familiar, comfortable. A good glass of wine, some nice music, the warmth around you, the light of the dancing flames. The stories come automatically. About what happened to you during the day, developments at work, news from friends and family. The stories from your past and your big dreams for the future. Things you don't usually share with others but that come so easy now, enveloped by warmth and trust. That's what a fire does to a person! Traditionally, fires were lit to keep the outside world at a distance. It's why a fire creates an atmosphere of intimacy and contact, where you listen to each other's stories.

A fire connects

Around a fire you share your holiday experiences with your friends, you tell your children a bedtime story, and you share your most intimate feelings with your loved one.

A look is all you need, and together you enjoy peaceful silence, gazing at the flames, because you don't need words to understand each other. The fire of love, where better than in front of an open fire? That is where you experience your most beautiful moments and when you take time for each other. That is where you share your stories, full of passion and full of fire!

There is **so much to tell...**



Faber means **175 years of quality**

The connective and soothing effect of an open fire is our passion. We are always looking for the best and most beautiful solutions, because we want our connoisseurs to enjoy an astonishing flame effect.

We strive for the same warmth and urge for quality in our contact with those around us. Our fires have been developed and produced in the Netherlands for devotees all over the world for more than 175 years. Today, Faber is part of the Irish family business Glen Dimplex, market leader in top-quality ambient electric fires. A strong and trusted combination, with a pure origin!

In the vanguard of the fire of the future
Faber's 'fire makers' are driven to produce the most beautiful ambient fires. Rooted in log fires, leading in gas fires and in the vanguard of fires with new fuels, such as biopropane, propane and water mist. With pure craftsmanship, knowledge and advanced technology, Faber is responsible for discoveries and patents that have become standard in the world of fires today. Our latest series of fires, the 'e-MatriX', uses water and electricity and is equally innovative. In short, 'making' ambient fires is part of Faber's DNA, and our pride and passion!

Your Faber fire built especially for you
If you choose a Faber, we build, adjust the settings and check the fire specifically for you. You can be certain that you have a characteristic Faber fire effect and a fire that operates perfectly and safely.



Faber Free standing

A free standing fire as a focal point

A free standing fire is often literally the focal point of a room. A place to gather round! Obviously you simply expect the best in every respect. Faber free standing fires are for demanding enthusiasts. The fire effect is comparable to that of our beloved gas inset fires; full flames at any height, decorated with life-like decorative logs or white Carrara pebbles. Always simple to operate and equipped with the latest technology. The design impresses with its simplicity and careful finish and suits a range of interior designs.

A well-balanced programme

Faber free standing fires are available in different versions; standing or suspended, with standing or horizontal logs, with three-sided panes, or just a pane at the front. That means plenty of variations, and you can choose what suits your taste and interior. The Faber specialist is there for you throughout the entire process!

Did you find your favourite Faber fire? It will be built, set and tested by Faber, specifically for you, before we deliver it to the Faber specialist who will install it in your home.



A Faber free standing fire **suits any interior**

Interior-design trends

Faber tracks the current interior design trends and developments in detail. This is reflected in our photography and the current trend information in this brochure. It shows how a Faber fire fits in your modern, classic or bohemian interior.

The Faber specialist will be pleased to assist!

Are you considering enriching your home with a Faber fire? Would you like an inspirational design that suits all your wishes and requirements? Faber has a network of selected fire specialists who are here to help. Committed and experienced enthusiasts who are familiar with the possibilities of Faber fires, and who have various Faber models on display. They are keen to advise and like to consider how you can translate your personal wishes into an appealing and attractive interior design. They also deal with professional installation. Check the Faber website for a Faber specialist near you.

An atmospheric town in Denmark

Blokhush is a popular seaside town in the north of Denmark. It is an atmospheric Danish town with a glorious beach and a wonderful block-shaped lighthouse with the name Rubjerg Knude Fyr. Faber developed a new gas fire concept with this lighthouse as its source of inspiration. The Blokhush is a free standing gas fire, a solitary design object with a wonderful fire provided by the Faber Log Burner®. Due to the single or double stacking modules, the Blokhush has its own character. There is even an optional real efficiency module that improves the efficiency of the fire by 10%! The efficiency module is always supplied together with a double stacking module.

Blokhush

Available with the options of a single, double or efficiency module



From joystick to hockey stick

"He takes the initiative and that is fine by me. A job stacking shelves in the supermarket. Cock of the walk amongst his friends, popular with the girls. Or in his own words 'It's going smoothly'."

Vejen



Farum



A

Jelling

A



Odense



A

Skive

Visible interior depth: 400 mm.
Minimum suspension height 200 mm from the floor.

A



Vaska

Also available as a soapstone version





The heart of every Faber fire

The burner

The familiar and loved fire effect of our gas fires starts with our burners. It's a Faber speciality, based on years of in-house development and experience, with lots of patents as a result. Together with the decorations, such as a log set, the burner determines the 'character' of the fire you look at; broadly spread in the fire, or in the middle, stretched out or vertical, more dynamic or really calm. It's a matter of taste! To help you determine your preference, we tell you a little about the characteristics and the differences.



Emberbed Burner®

Sparkling fire



The Faber Emberbed Burner produces a compact, but crackling fire. You can choose to combine the flames with horizontal decorative logs on a bed of ash and amber-coloured stones that enhance the flames' light or with white Carrara pebbles as an alternative. The height of the flames can be set accurately with the supplied remote control. The supplied remote control also has a convenient day timer and thermostat function.

Log Burner®

The 'original'



A Faber Log Burner gives you the fire of your memories or dreams - beautiful, lively flames that tickle along standing or lying logs. It is easy to control the height of the flames with the supplied remote control, which has a number of convenient additional functions. In the free standing Faber Blokhus and Vejen, the Log Burner is combined with the Faber light module, which lights the ash bed from below and produces an extra warm glow, even when the flames are turned down low or the fire itself is switched off. The Faber Log Burner is a concept in the world of fires.



Glowing embers lighting

LED
lightning

The atmosphere of red-glowing charcoal

For those who would like to do even more justice to the sense of glowing coals in a gas fire, or who would like to enjoy the embers of a glowing fire, Faber developed the 'Symbio®' light module. Symbio® sends pulsating, heat-free light to the coal bed above, making it glow a warm red. The light of the Symbio® module creates a warm atmosphere, particularly when the flames of the fire are turned down low, and even when the warm flames are completely switched off. The LED technology makes this module low in energy and completely free of heat. Symbio® is supplied for the Faber Vejen the Faber Vejen and Blokhuis.



No natural gas connection,



but you'd love a gas fire?
No problem!

You no longer have a permanent gas connection or you'd rather not be dependent on one, but you'd still like a gas fire in your home? Sure! All Faber gas fires are suitable immediately for use on propane gas or biopropane gas.

The gas does not come via the gas pipe to the gas fire, but through smartly connected gas bottles. You can enjoy the warmth and atmosphere of the gas fire of your dreams, even without a natural-gas connection. If you would like to find out more about the options of propane or biopropane, please take a look at the Faber website on **faberfires.com** or ask the Faber specialist about the options.



Draw a dream fire

in your own home

Measurements provide knowledge!

Would you like to know the exact dimensions of our inset fires and stoves? Our dimensions drawings are in this brochure or on our website **www.faberfires.com**.

You can also find our fires in the design programmes 'SketchUp' or PaletteCad. Convenient when you want to draw on your own inspiration! <https://www.sketchup.com/> and https://www.palettacad.com/en/home_2

The Faber dealer, who can be found on **www.faberfires.com**, will help you to realise your design.

Free standing fires

	Page	DIMENSIONS		BURNER	
		Exterior dimensions WxHxD in mm	Fire display WxHxD in mm	Emberbed	Log Burner®
Blokhush*	10	560 x 1090 x 435	435 x 330 x 247		●
Vejen	12	468 x 1048 x 393	344 x 418 x 236		
Farum	14	594 x 944 x 323	450 x 501	●	
Jelling	16	550 x 820 x 400	460 x 335 x 250		●
Odense	18	560 x 980 x 402	375 x 335 x 230		●
Skive	20	550 x 672 x 479	460 x 335 x 250		●
Vaska	22	472 x 1125 x 458	323 x 422		●
Vaska Soapstone	22	472 x 1125 x 458	323 x 422		●

*Available with the options of a single, double or efficiency module

For more information, please take a look at the website www.faberfires.com

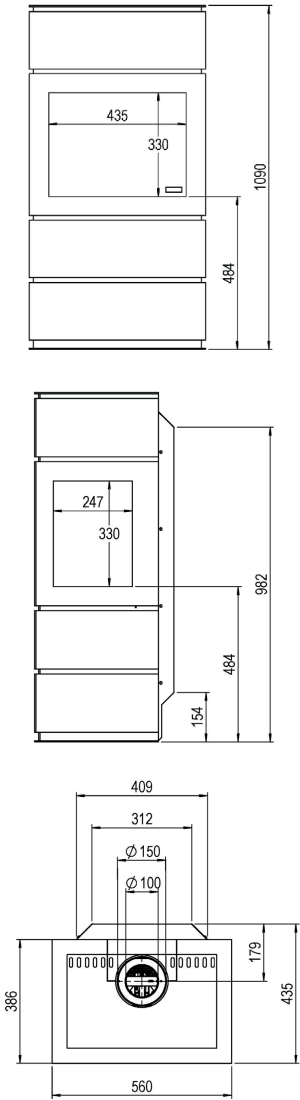
It is not possible to derive any rights from the listed values. Fires on biopropane or propane have a lower flame height.
*Efficiency, capacity, energy-efficiency index and energy-efficiency class on the basis of gas type G20.

DECORATION			INTERIOR	CONTROLLER	Minimum heat output*	Nominal heat output*	Energy label
Logs	White Carrara pebbles	Glowing embers lighting	Back wall steel slats	Remote control			
●		●	●	●	3.0 kW	6.1 kW	A
●		●	●		2.8 kW	5.8 kW	B
●	Optional		●	●	1.5 kW	4.2 kW	A
●			●	●	3.0 kW	6.1 kW	A
●			●	●	3.0 kW	6.1 kW	A
●			●	●	3.0 kW	6.1 kW	A
●			●	●	3.9 kW	6.4 kW	A
●			●	●	3.9 kW	6.4 kW	A

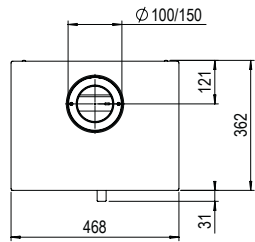
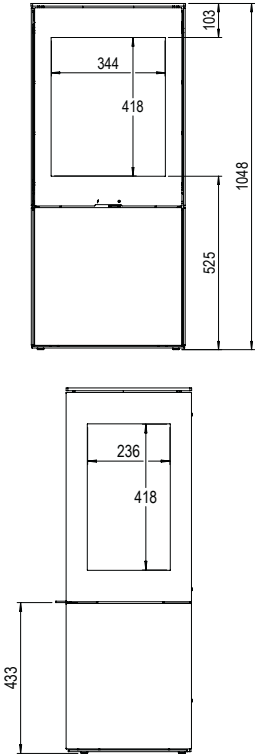
The options per fire produce an additional cost.

Line drawings

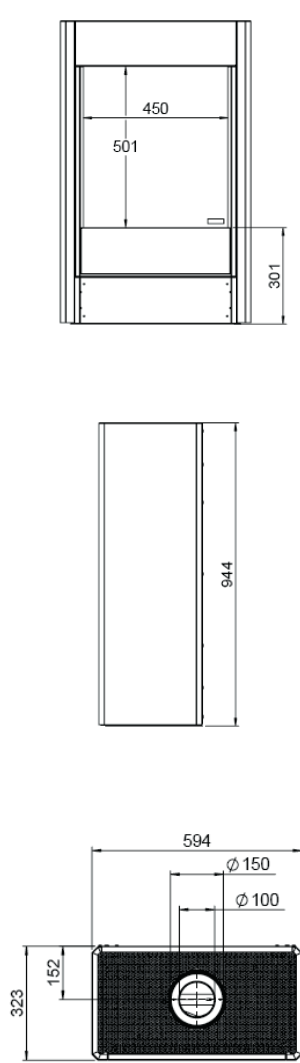
Blokhush
Page 10



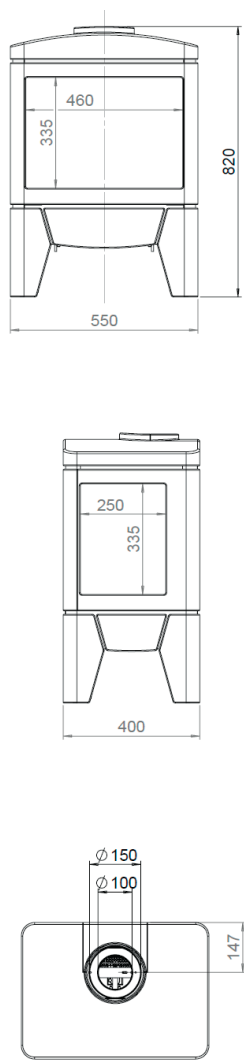
Vejen
Page 12



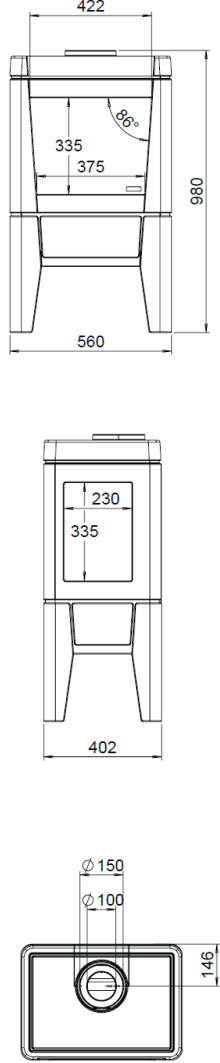
Farum
Page 14



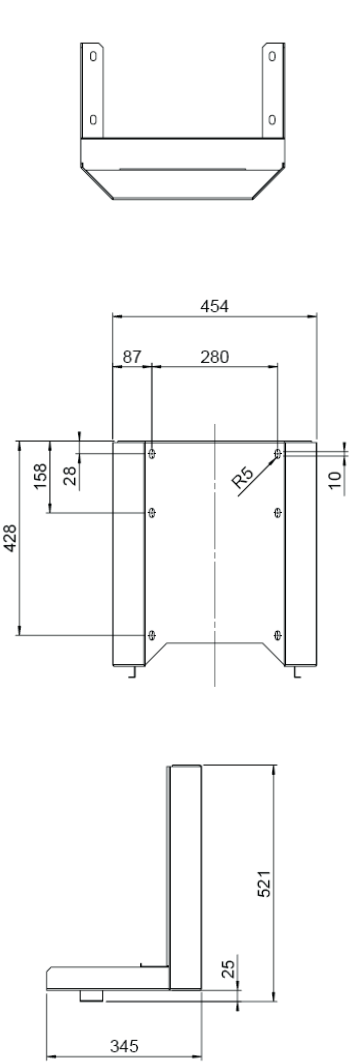
Jelling
Page 16



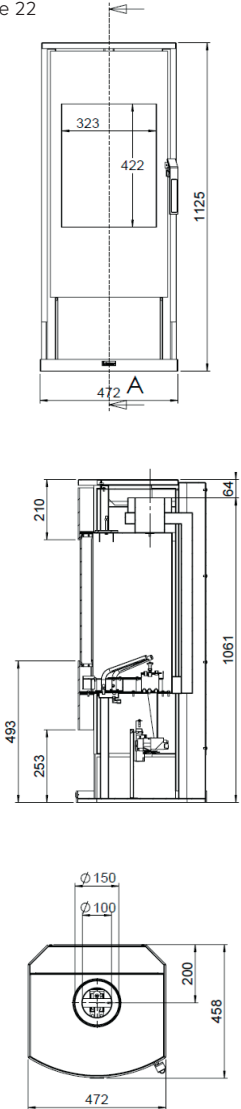
Odense
Page 18



Skive
Page 20



Vaska
Page 22



Your dealer:

Disclaimer

We have produced this publication with the greatest possible care. However the information, including drawings, in this publication may be represented incorrectly, it may have changed or been supplemented. This publication is subject to change. Glen Dimplex Benelux BV is not responsible for the consequences of actions, decisions or results that are solely based on the information in this publication. We emphasise that the correct installation and safe operation should be in accordance with the applicable rules and regulations, the manual, and the expertise and advice of an expert. The photos in this publication only represent examples of possible configurations. Whilst stocks last. Our terms and conditions of delivery are available upon request.



Saturnus 8, NL-8448 CC Heerenveen
PO Box 219, NL-8440 AE Heerenveen

t +31 513 656 500
e info@faberfires.com

faberfires.com

@faberhaarden



FaberInternational



Proud brand of:

