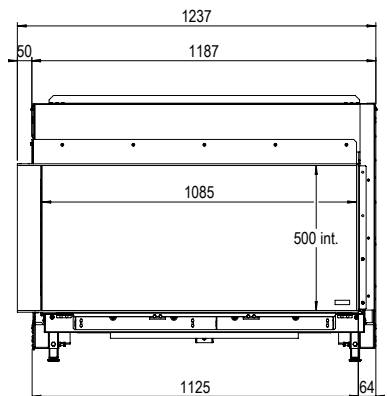
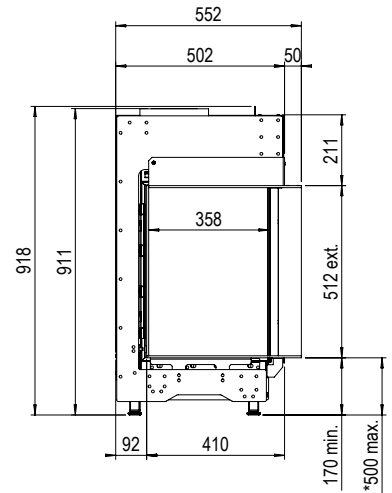
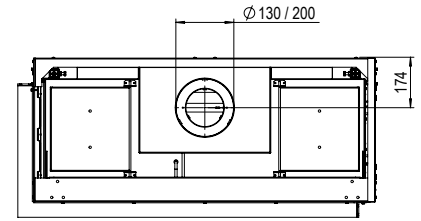


# MatriX | 1050/500 II



**ENERG**  
енергия · енергія · energia · ENERGY · ENERGIE · ENERGI

Faber **MatriX 1050/500 I, II, III**

**A++**  
**A+**  
**A**  
**B**  
**C**  
**D**  
**E**  
**F**  
**G**

**8,1 kW**

ENERGIA · ЕНЕРГИЯ · ΕΝΕΡΓΕΙΑ · ENERGIA · ENERGY · ENERGIE · ENERGI

2015/1186

## Specifications MatriX 1050/500 II

Type	Built-in
Model	Two-sided model
Exterior dimensions WxHxD in mm	1237 x 918 x 552
Fire display WxHxD in mm	1085 x 500 x 358
System	Log Burner 2.0®
Decoration	Log set
Back walls	Smooth steel
Remote	ITC remote
Power (kW)	8,1
Operating system	Honeywell
Energy label	B

### OPTIONS

- Glass back wall black
- Anti-reflective glass
- Symbio Module
- Wall bracket
- Adjustable legs

Depth frame 100mm will be available again in 2021. Faber will inform you when the frame becomes available in due course.

There is **so much to tell...**

For more information, please take a look at the website

[www.faberfires.com](http://www.faberfires.com)